

# Correcting aspect ratios

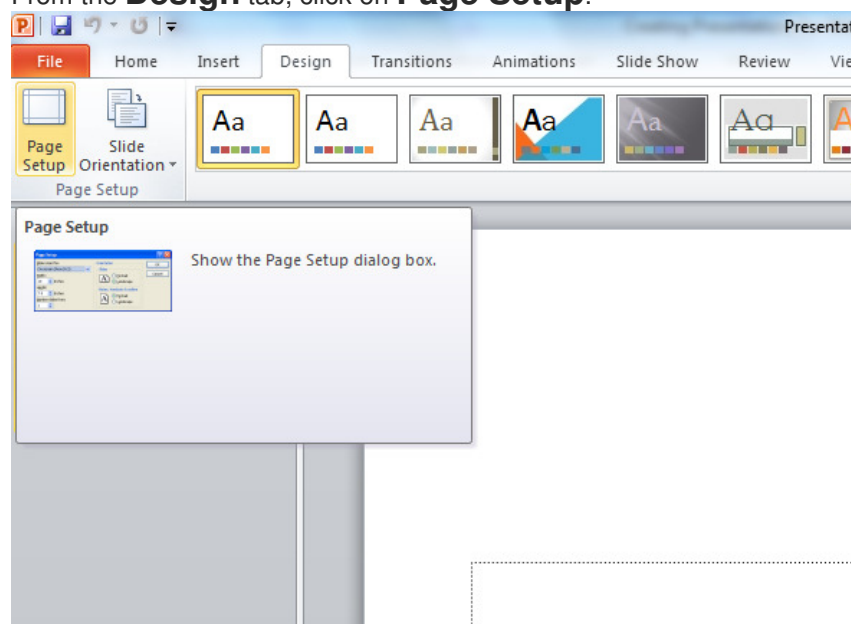
## PowerPoint

Traditionally, PowerPoint presentations have been created to a [4:3 Aspect Ratio](#) - the almost square ratio that standard televisions and computer monitors display in. As technology has moved on, more and more presentations can be given in 16:9 Aspect Ratio - the ratio used by widescreen laptops and HD televisions.

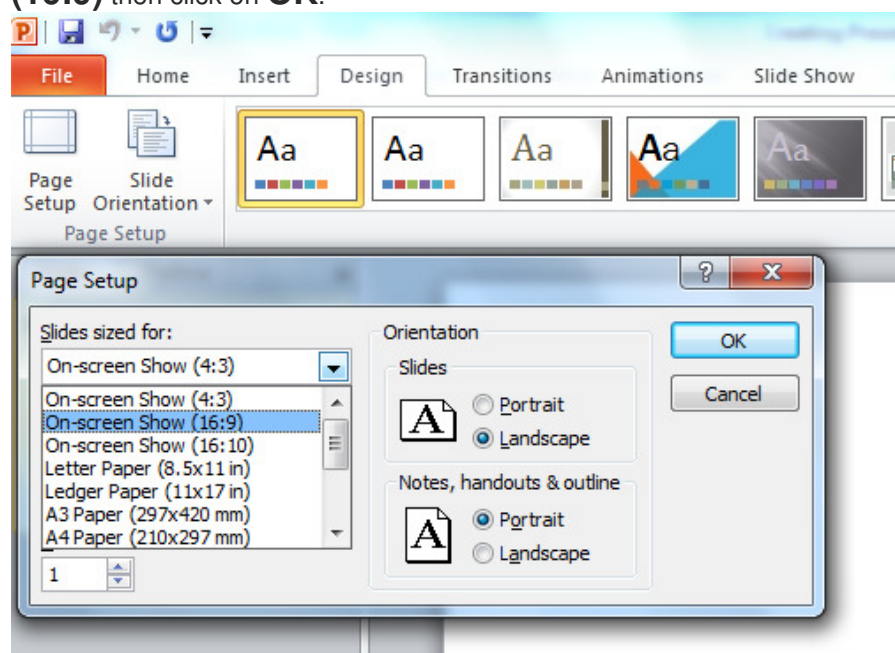
The conference centres in 20 Moorgate and Head Office both display presentations in 16:9 Aspect Ratio.

To make sure your presentation looks at its best on a 16:9 AR screen, you should change the slide set up in PowerPoint.

From the **Design** tab, click on **Page Setup**.



In the menu that appears, select **Slides sized for:** and change to **On Screen Show (16:9)** then click on **OK**.



**Note:** If you already have content in your slides, you should review it to make sure that it is laid out correctly.

## Beamer

If you use LaTeX to produce slides using Beamer, again the default is 4:3. In current Beamer classes, put the following line in the preamble.

```
\documentclass[aspectratio=169]{beamer}
```

If that doesn't work, use

```
\usepackage[orientation=landscape,size=custom,width=16,height=9.75,scale=0.5,debug]{beamerposter}
```

(9.75 because it spans 16:9 and 16:10.)

**Note:** If you already have content in your slides, you should review it to make sure that it is laid out correctly.